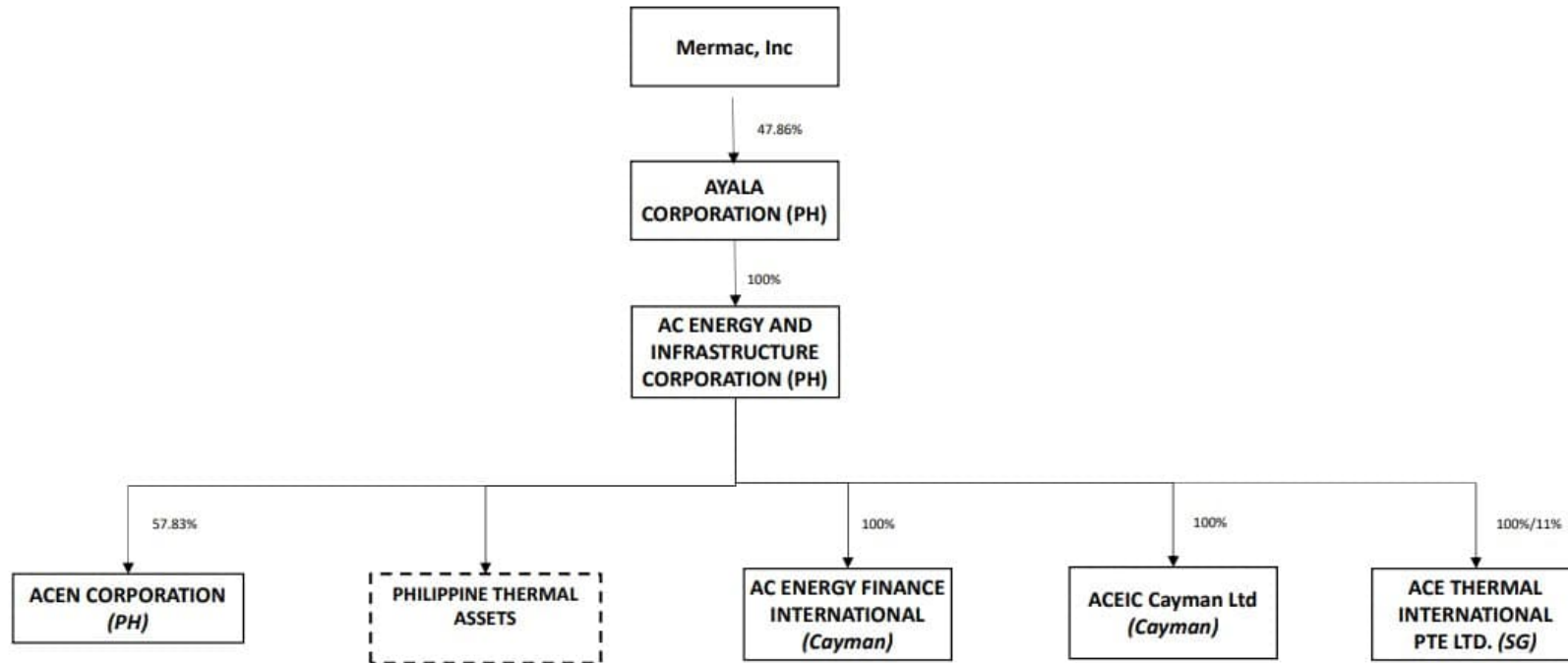


**Attachment III**

Page 1 of 11

**ACEN CORPORATION AND SUBSIDIARIES  
SUPPLEMENTARY SCHEDULE REQUIRED  
UNDER REVISED SRC RULE 68**

**Conglomerate Map  
As of December 31, 2023**



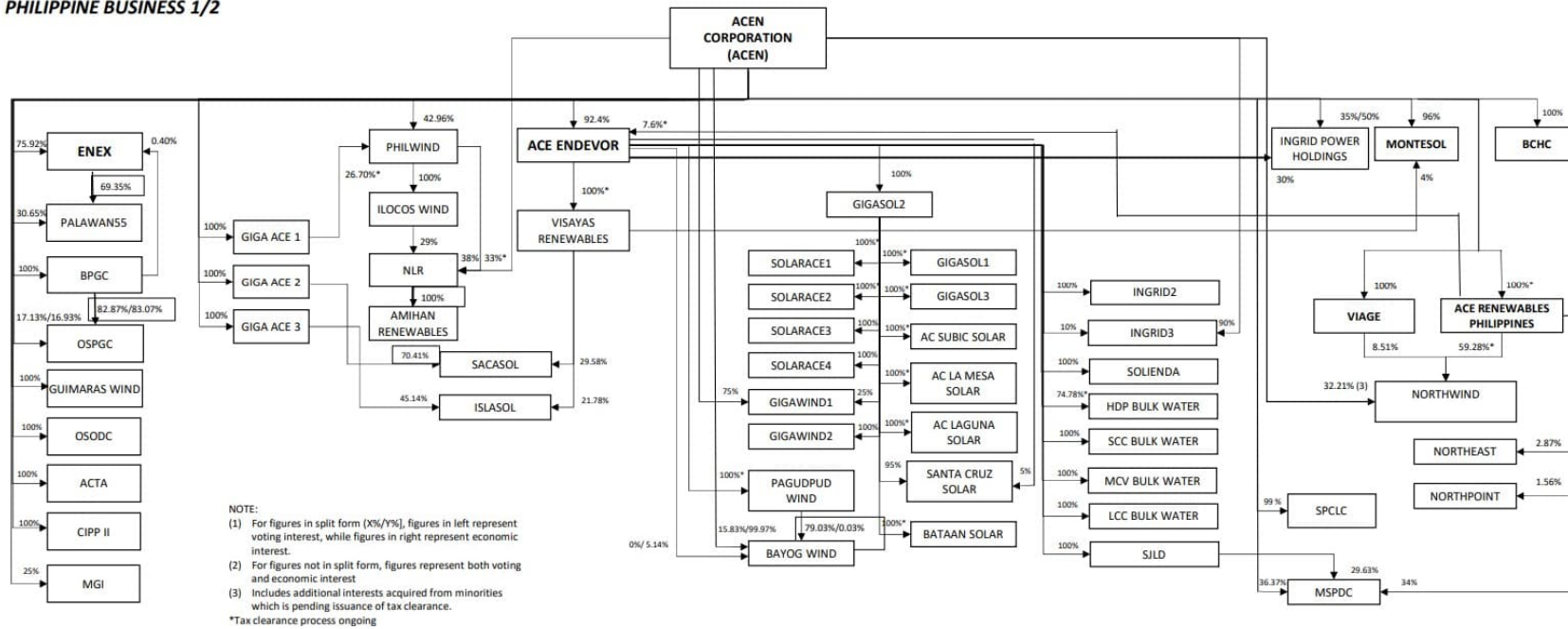
**NOTE:**

- (1) For figures in split form (X%/Y%), figures in left represent voting interest, while figures in right represent economic interest.
- (2) For figures not in split form, figures represent both voting and economic interest

**AC ENERGY CORPORATION AND SUBSIDIARIES  
SUPPLEMENTARY SCHEDULE REQUIRED  
UNDER REVISED SRC RULE 68**

**Conglomerate Map  
As of December 31, 2023**

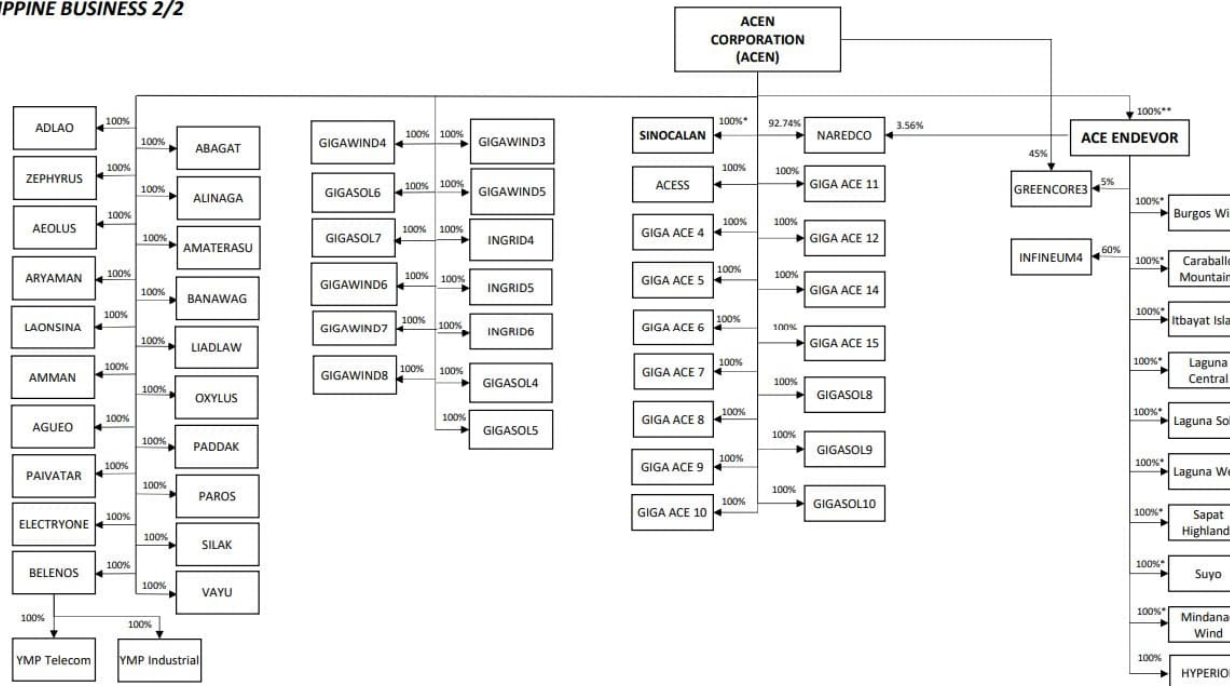
**ACEN CORPORATION  
PHILIPPINE BUSINESS 1/2**



**AC ENERGY CORPORATION AND SUBSIDIARIES  
SUPPLEMENTARY SCHEDULE REQUIRED  
UNDER REVISED SRC RULE 68**

**Conglomerate Map  
As of December 31, 2023**

**ACEN CORPORATION  
PHILIPPINE BUSINESS 2/2**

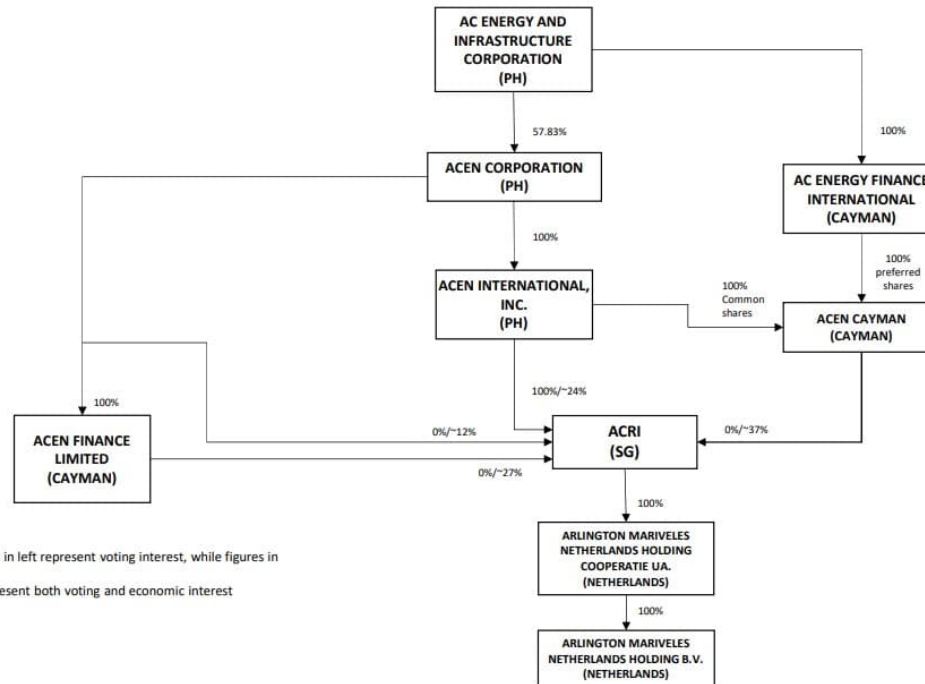


NOTE:  
 (1) For figures in split form (X%/Y%), figures in left represent voting interest, while figures in right represent economic interest.  
 (2) For figures not in split form, figures represent both voting and economic interest  
 (3) Includes additional interests acquired from minorities which is pending issuance of tax clearance.  
 \*Beneficial Ownership, pending BIR CAR  
 \*\* Effective ownership interest (direct and indirect ownership)

**AC ENERGY CORPORATION AND SUBSIDIARIES  
SUPPLEMENTARY SCHEDULE REQUIRED  
UNDER REVISED SRC RULE 68**

**Conglomerate Map  
As of December 31, 2023**

**ACEN CORPORATION  
INTERNATIONAL BUSINESS**



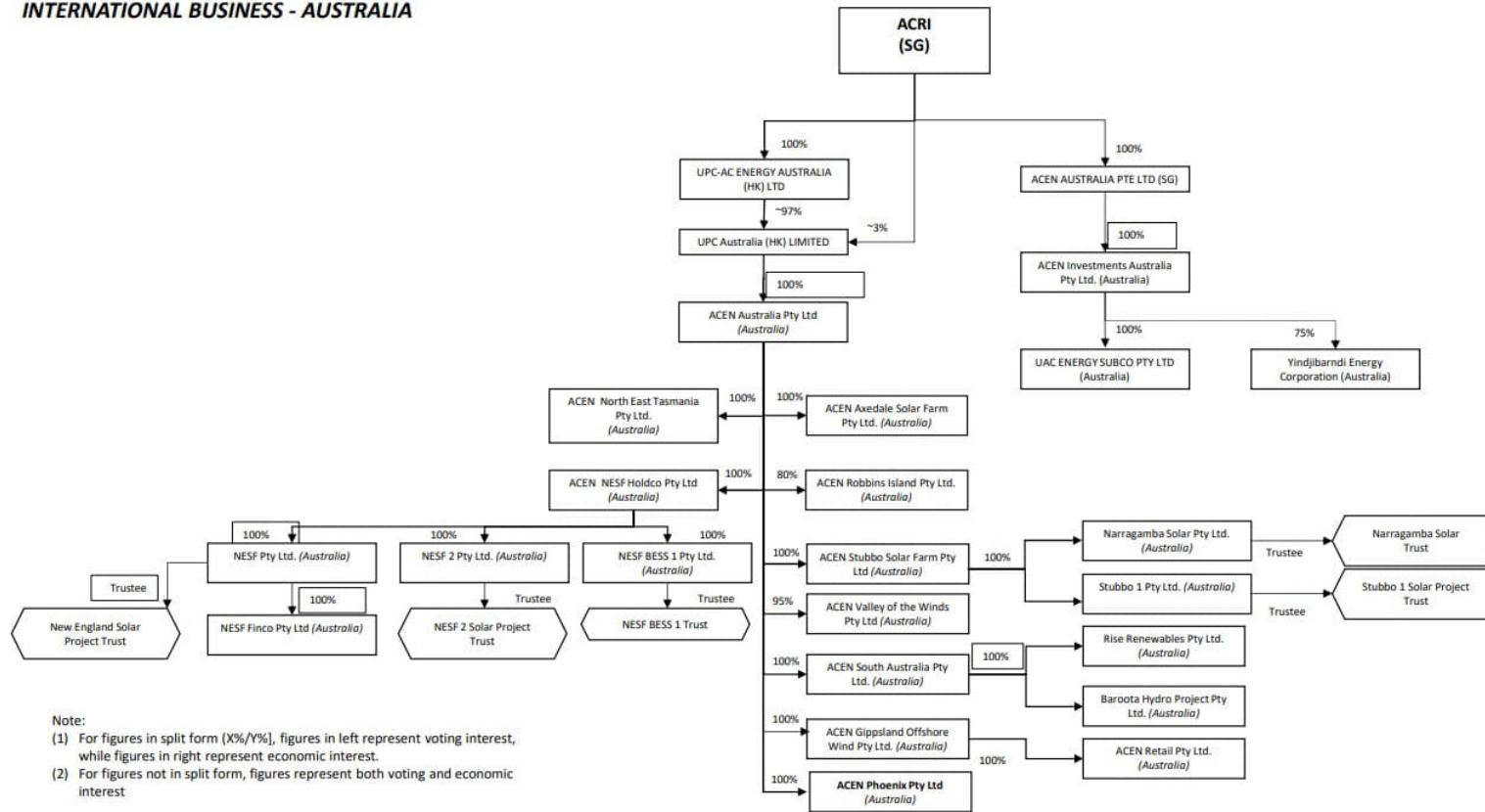
Note:  
 (1) For figures in split form (X%/Y%), figures in left represent voting interest, while figures in right represent economic interest.  
 (2) For figures not in split form, figures represent both voting and economic interest

GLOSSARY  
 ACRI – ACEN Renewables International Pte. Ltd.

**AC ENERGY CORPORATION AND SUBSIDIARIES  
SUPPLEMENTARY SCHEDULE REQUIRED  
UNDER REVISED SRC RULE 68**

**Conglomerate Map  
As of December 31, 2023**

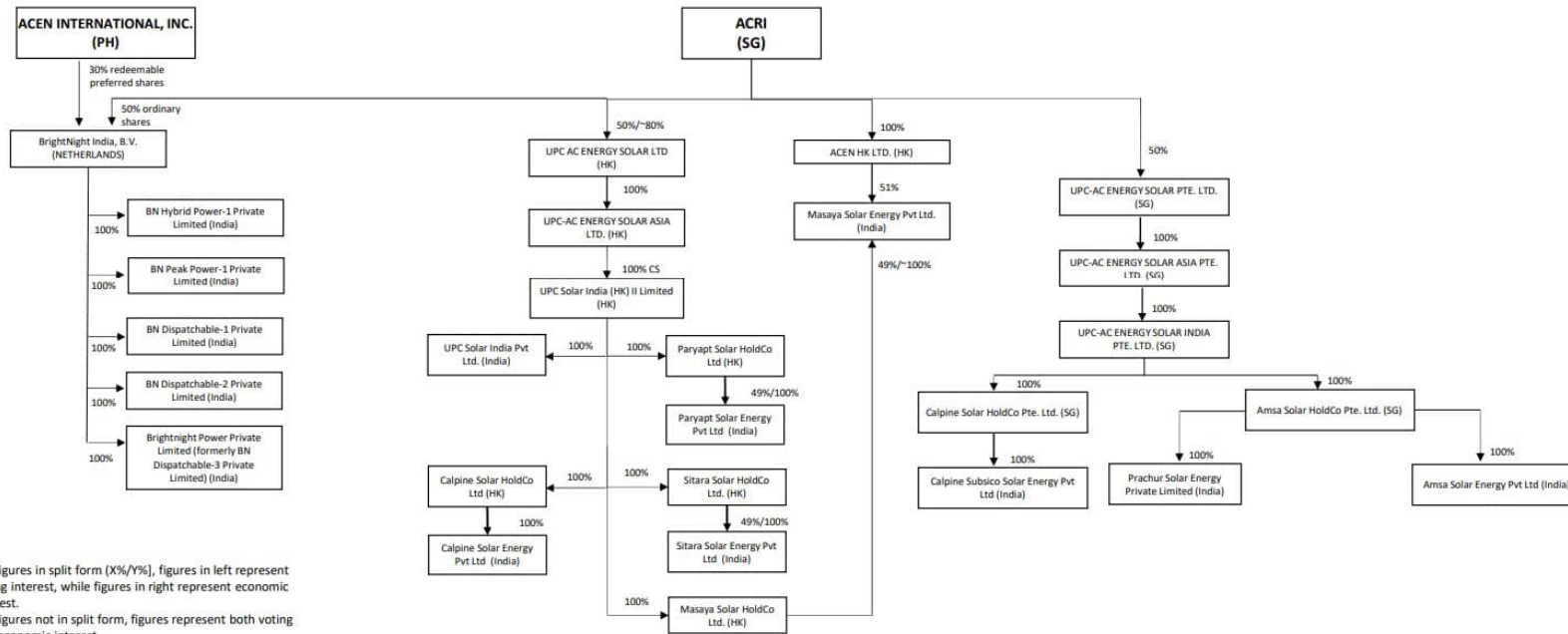
**INTERNATIONAL BUSINESS - AUSTRALIA**



**AC ENERGY CORPORATION AND SUBSIDIARIES  
SUPPLEMENTARY SCHEDULE REQUIRED  
UNDER REVISED SRC RULE 68**

**Conglomerate Map  
As of December 31, 2023**

**INTERNATIONAL BUSINESS - INDIA**

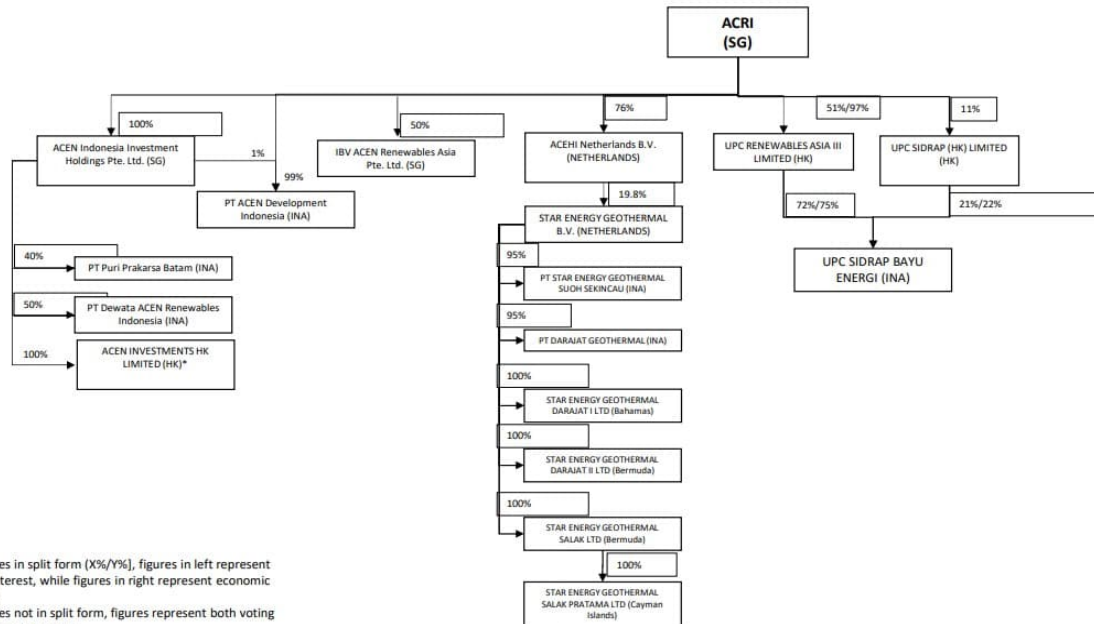


Note:  
(1) For figures in split form (X%/Y%), figures in left represent voting interest, while figures in right represent economic interest.  
(2) For figures not in split form, figures represent both voting and economic interest

**AC ENERGY CORPORATION AND SUBSIDIARIES  
SUPPLEMENTARY SCHEDULE REQUIRED  
UNDER REVISED SRC RULE 68**

**Conglomerate Map  
As of December 31, 2023**

**INTERNATIONAL BUSINESS - INDONESIA**

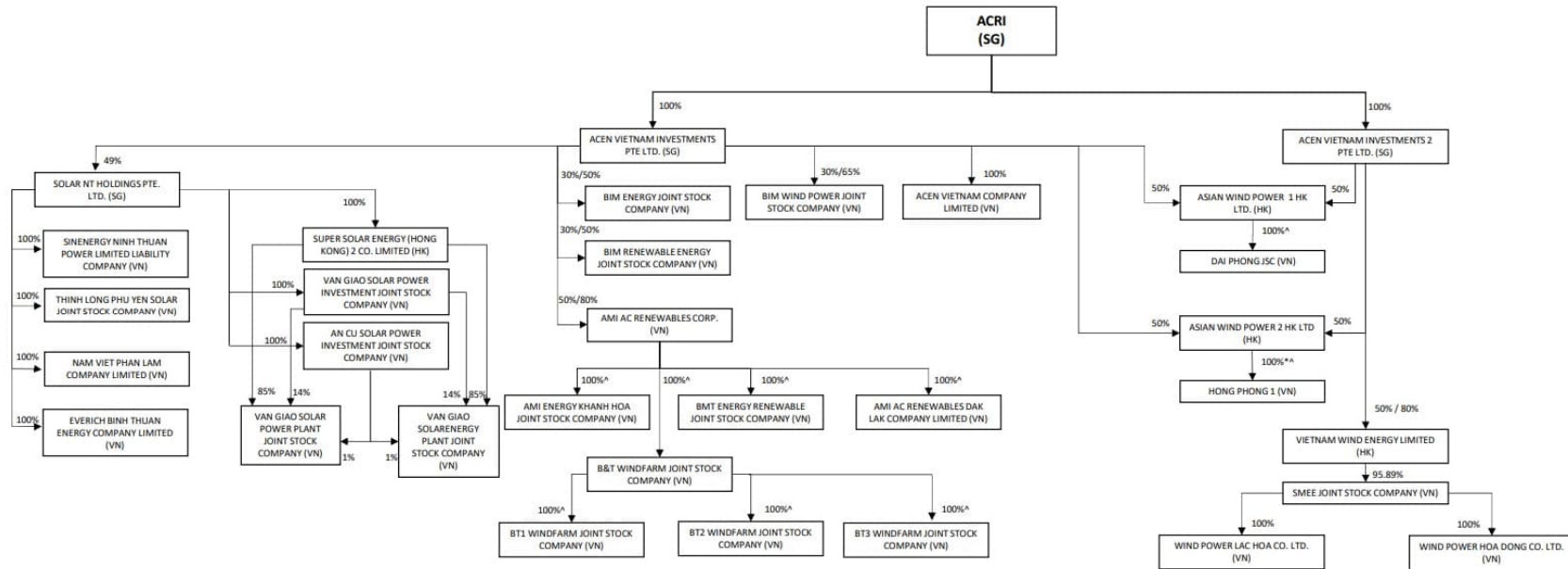


Note:  
 (1) For figures in split form (X%/Y%), figures in left represent voting interest, while figures in right represent economic interest.  
 (2) For figures not in split form, figures represent both voting and economic interest  
 \*Updated ownership in Hong Kong Registry being processed.

**AC ENERGY CORPORATION AND SUBSIDIARIES  
SUPPLEMENTARY SCHEDULE REQUIRED  
UNDER REVISED SRC RULE 68**

**Conglomerate Map  
As of December 31, 2023**

**INTERNATIONAL BUSINESS – VIETNAM**



Note:

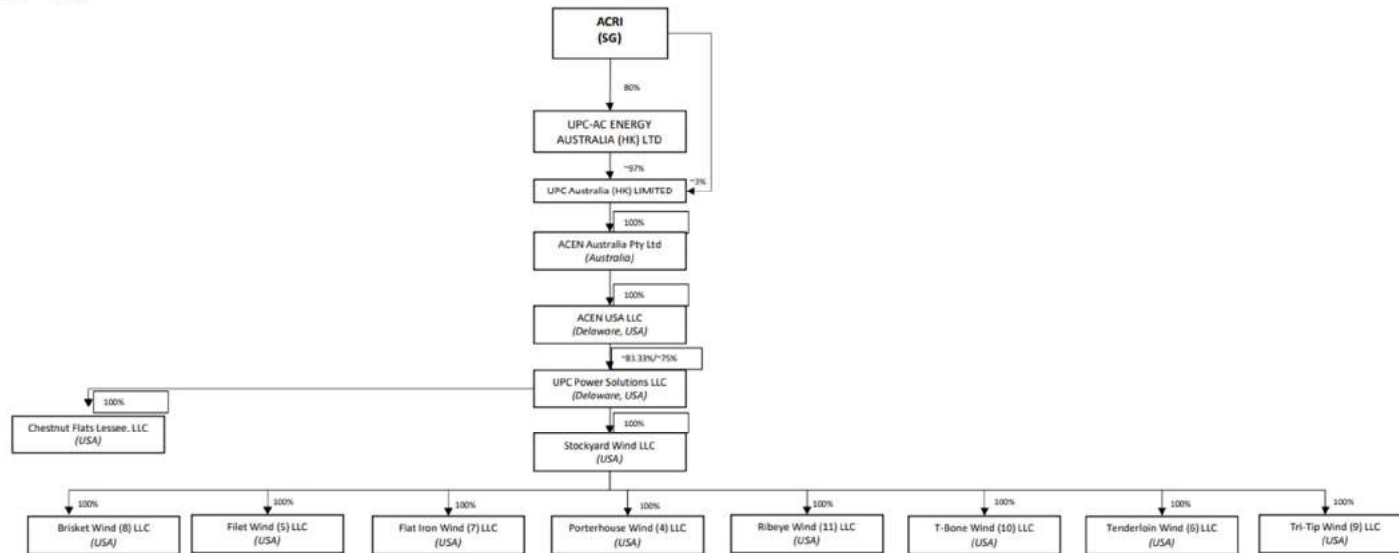
- (1) For figures in split form (X%/Y%), figures in left represent voting interest, while figures in right represent economic interest.
- (2) For figures not in split form, figures represent both voting and economic interest
- (3) For Van Giao Solar Power Plant Joint Stock Company and Van Giao Solar Energy Plant Joint Stock Company, the figures represent the par value of total equity (regardless whether voting or non-voting)



**AC ENERGY CORPORATION AND SUBSIDIARIES  
SUPPLEMENTARY SCHEDULE REQUIRED  
UNDER REVISED SRC RULE 68**

**Conglomerate Map  
As of December 31, 2023**

**INTERNATIONAL BUSINESS – USA**



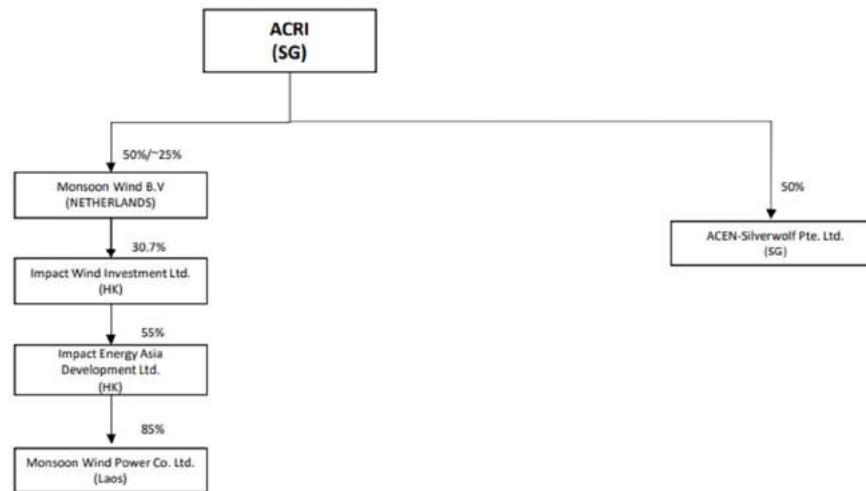
Note:  
(1) For figures in split form (X%/Y%), figures in left represent voting interest, while figures in right represent economic interest.  
(2) For figures not in split form, figures represent both voting and economic interest.



**AC ENERGY CORPORATION AND SUBSIDIARIES  
SUPPLEMENTARY SCHEDULE REQUIRED  
UNDER REVISED SRC RULE 68**

**Conglomerate Map  
As of December 31, 2023**

***INTERNATIONAL BUSINESS – OTHER JURISDICTIONS (2)***



**Note:**

- (1) For figures in split form (X%/Y%), figures in left font represent voting interest, while figures in right represent economic interest.
- (2) For figures not in split form, figures represent both voting and economic interest