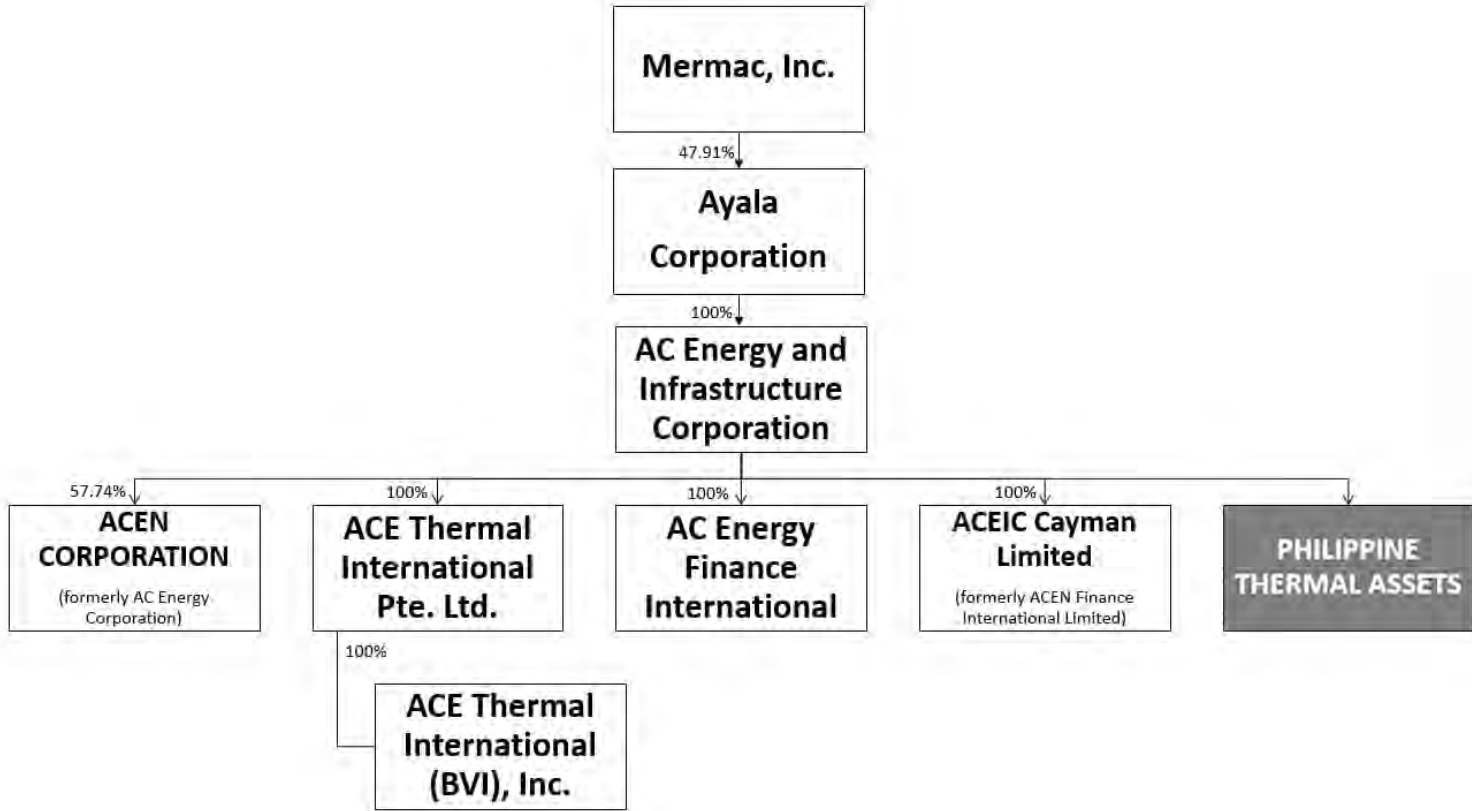


ACEN CORPORATION (Formerly AC Energy Corporation)
AND SUBSIDIARIES
SUPPLEMENTARY SCHEDULE REQUIRED
UNDER REVISED SRC RULE 68

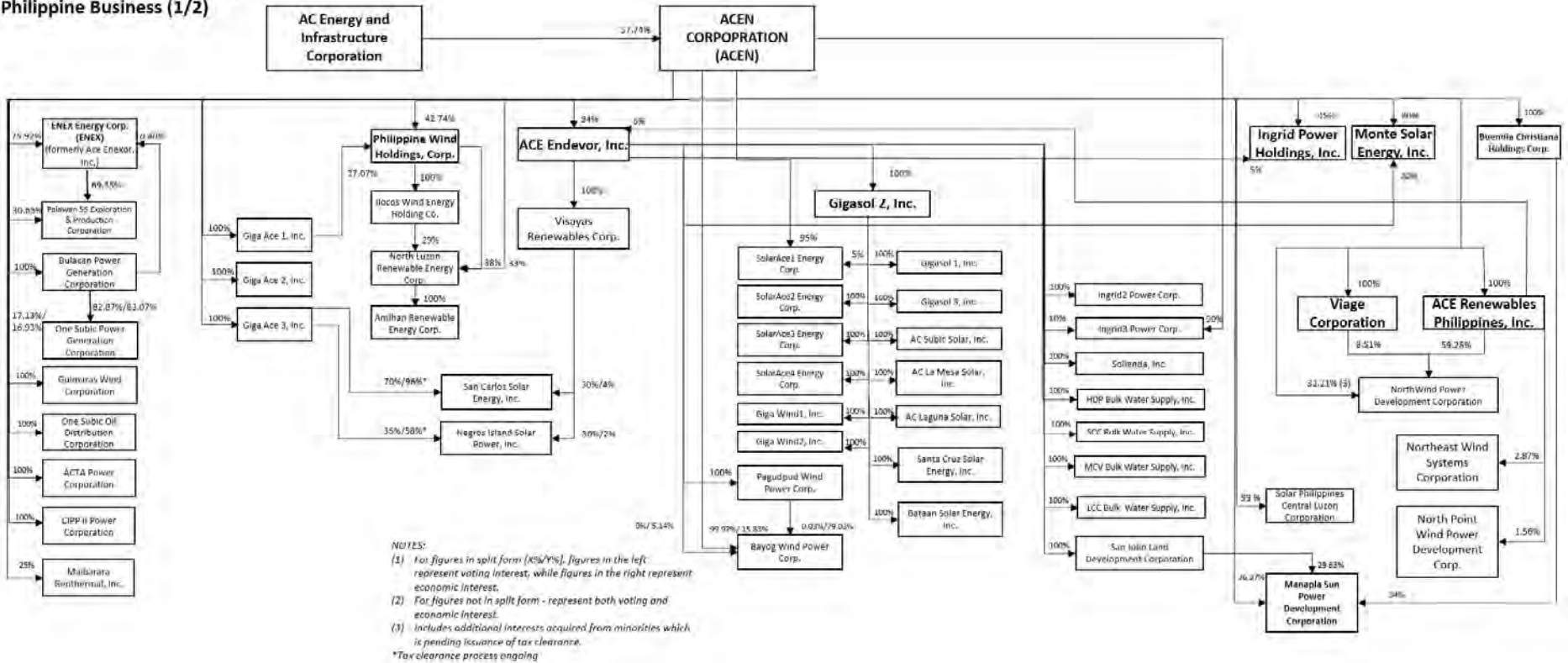
Conglomerate Map
As at December 31, 2022



AC ENERGY CORPORATION (Formerly AC Energy Corporation)
AND SUBSIDIARIES
SUPPLEMENTARY SCHEDULE REQUIRED
UNDER REVISED SRC RULE 68

Conglomerate Map
As at December 31, 2022

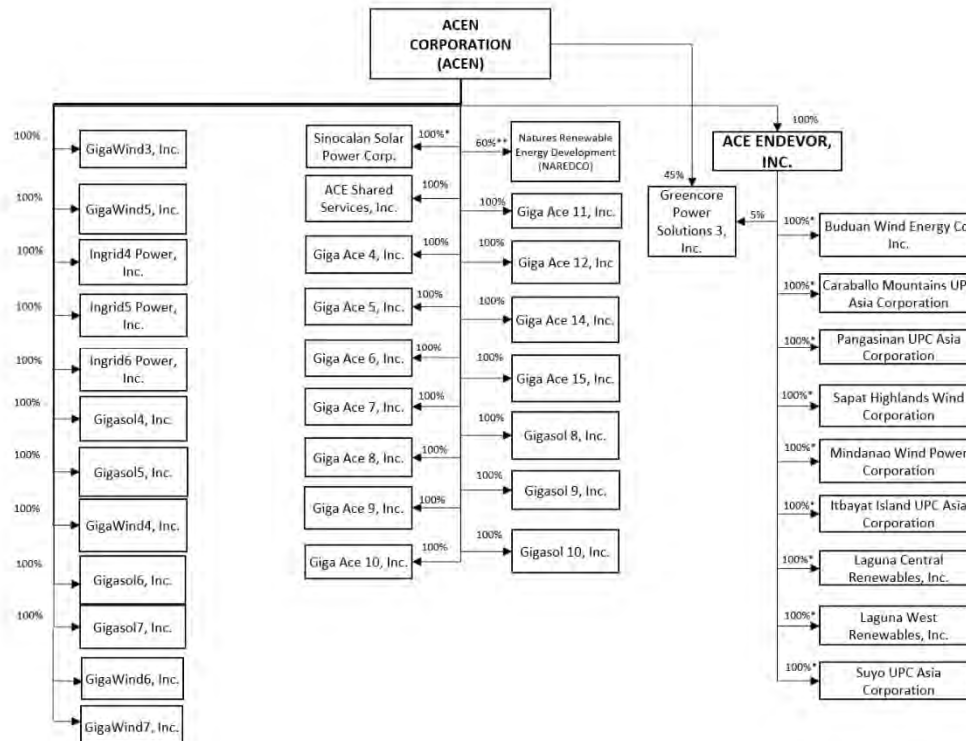
ACEN CORPORATION (ACEN)
Philippine Business (1/2)



**AC ENERGY CORPORATION (Formerly AC Energy Corporation)
AND SUBSIDIARIES
SUPPLEMENTARY SCHEDULE REQUIRED
UNDER REVISED SRC RULE 68**

**Conglomerate Map
As at December 31, 2022**

**ACEN CORPORATION (ACEN)
Philippine Business (2/2)**

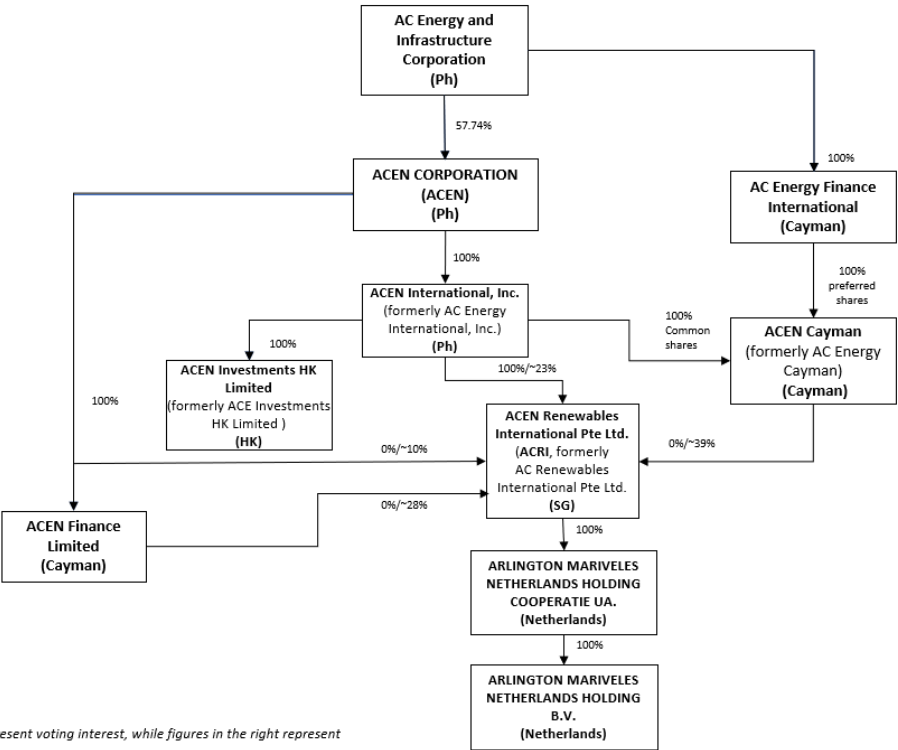


NOTES
 (1) For figures in split form (X%/Y%), figures in the left represent voting interest, while figures in the right represent economic interest.
 (2) For figures not in split form, figures in black font represent both voting and economic interest
 (3) Includes additional interests acquired from minorities which is pending issuance of tax clearance.
 *Beneficial Ownership, pending BIR CAR
 ** SEC approval of the increase in capital stock (for the additional shares to be issued to ACEN to bring its ownership from 45% to 60%) is pending.

AC ENERGY CORPORATION (Formerly AC Energy Corporation) AND SUBSIDIARIES SUPPLEMENTARY SCHEDULE REQUIRED UNDER REVISED SRC RULE 68

Conglomerate Map As at December 31, 2022

ACEN CORPORATION (ACEN) International Business

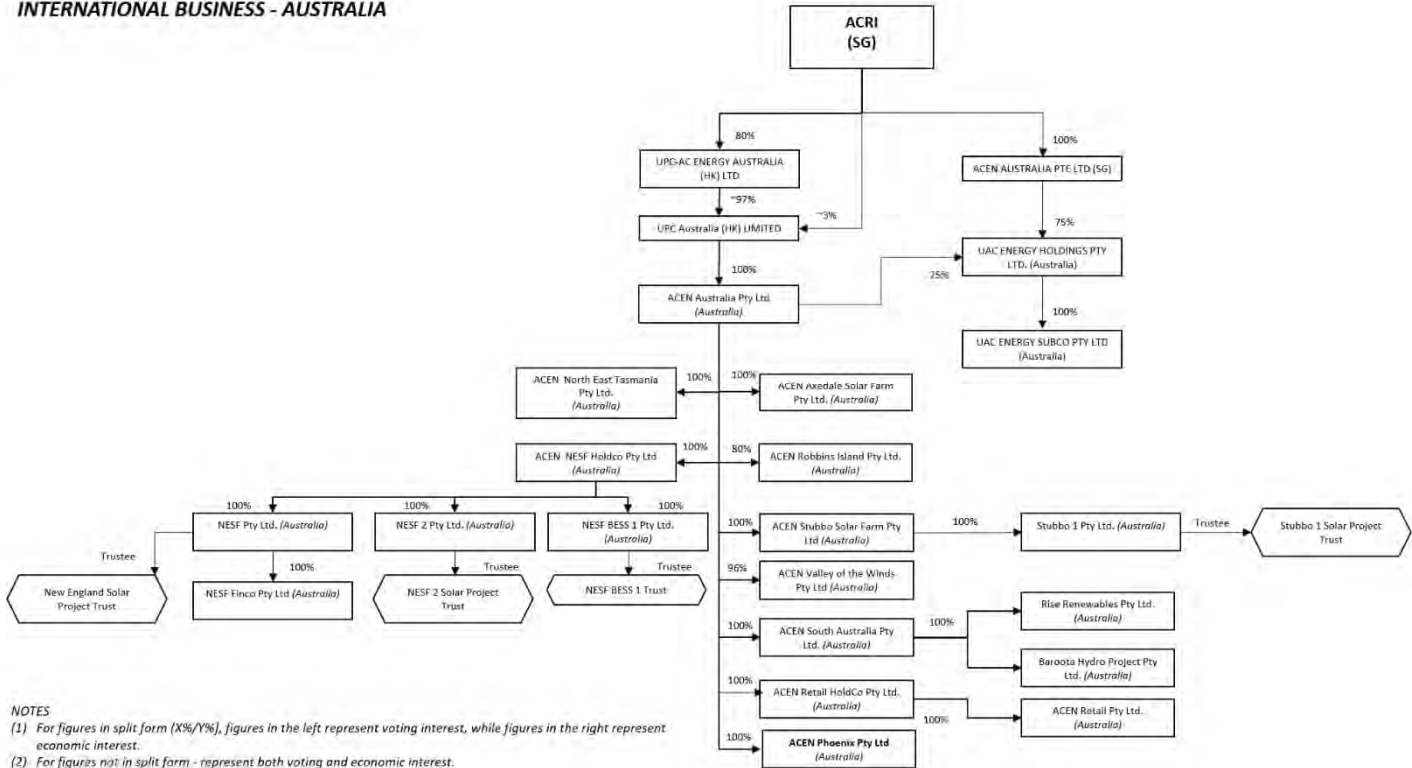


NOTES: (1) For figures in split form (X%/Y%), figures in the left represent voting interest, while figures in the right represent economic interest. (2) For figures not in split form - represent both voting and economic interest.

**AC ENERGY CORPORATION (Formerly AC Energy Corporation)
 AND SUBSIDIARIES
 SUPPLEMENTARY SCHEDULE REQUIRED
 UNDER REVISED SRC RULE 68**

**Conglomerate Map
 As at December 31, 2022**

INTERNATIONAL BUSINESS - AUSTRALIA

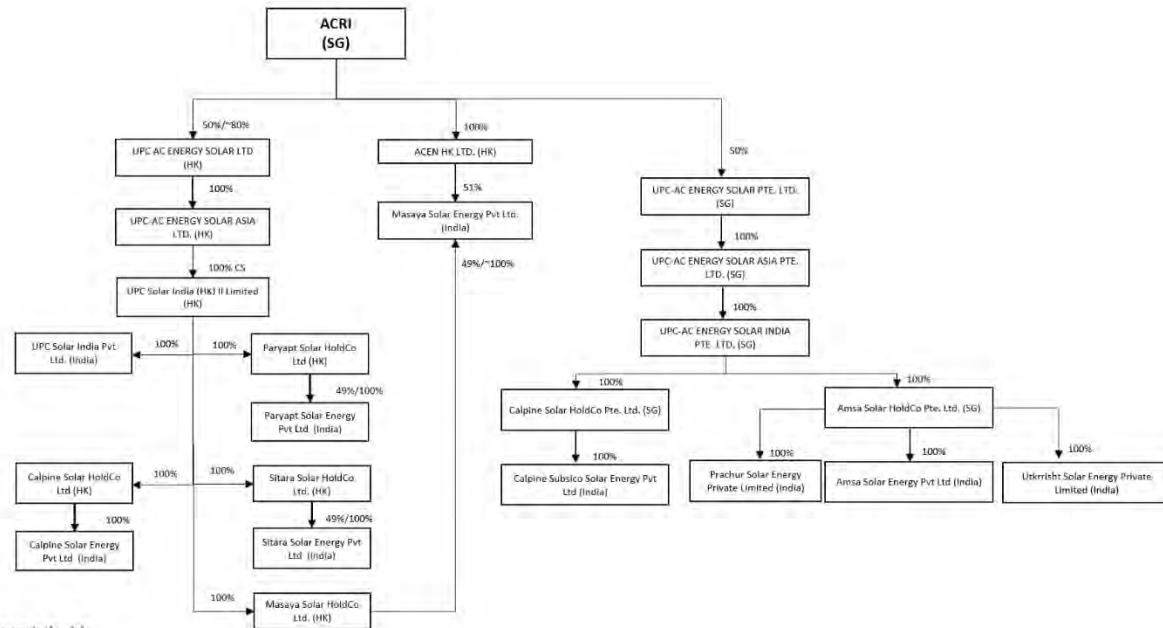


NOTES
 (1) For figures in split form (X%/Y%), figures in the left represent voting interest, while figures in the right represent economic interest.
 (2) For figures not in split form - represent both voting and economic interest.

**AC ENERGY CORPORATION (Formerly AC Energy Corporation)
AND SUBSIDIARIES
SUPPLEMENTARY SCHEDULE REQUIRED
UNDER REVISED SRC RULE 68**

**Conglomerate Map
As at December 31, 2022**

INTERNATIONAL BUSINESS - INDIA



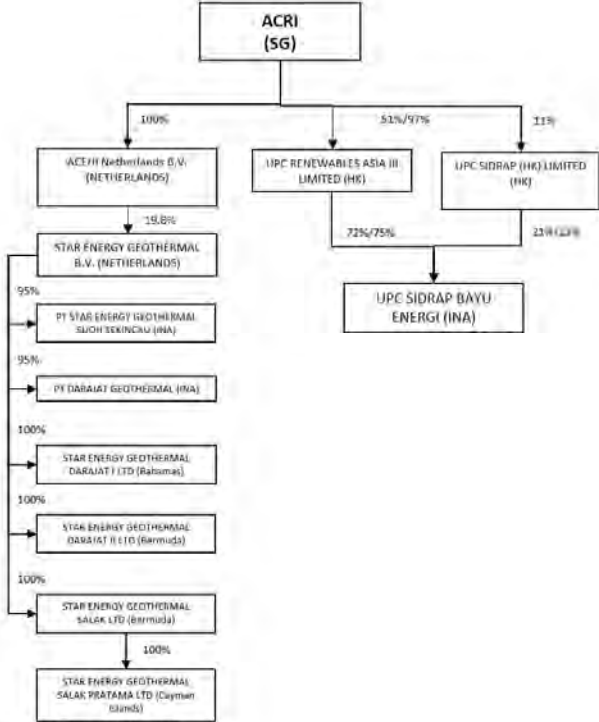
NOTES

- (1) For figures in split form (X%/Y%), figures in the left represent voting interest, while figures in the right represent economic interest.
- (2) For figures not in split form - represent both voting and economic interest.

**AC ENERGY CORPORATION (Formerly AC Energy Corporation)
 AND SUBSIDIARIES
 SUPPLEMENTARY SCHEDULE REQUIRED
 UNDER REVISED SRC RULE 68**

**Conglomerate Map
 As at December 31, 2022**

INTERNATIONAL BUSINESS - INDONESIA

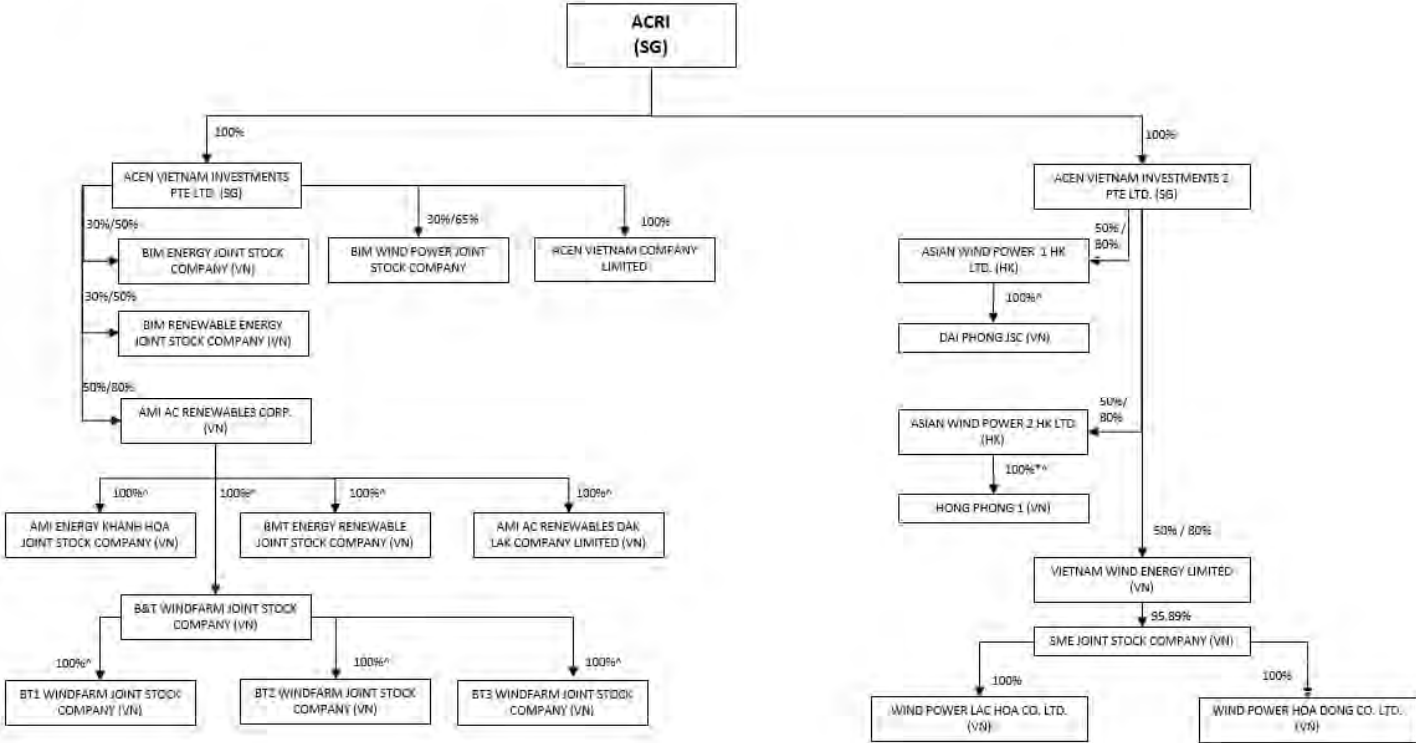


NOTES
 (1) For figures in split form (X%/Y%), figures in the left represent voting interest, while figures in the right represent economic interest.
 (2) For figures not in split form - represent both voting and economic interest.

**AC ENERGY CORPORATION (Formerly AC Energy Corporation)
 AND SUBSIDIARIES
 SUPPLEMENTARY SCHEDULE REQUIRED
 UNDER REVISED SRC RULE 68**

**Conglomerate Map
 As at December 31, 2022**

INTERNATIONAL BUSINESS – VIETNAM

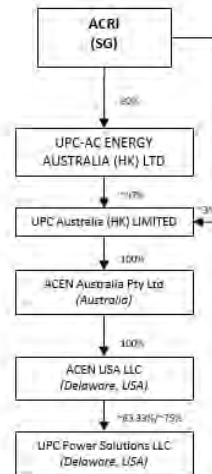


NOTES
 (1) For figures in split form (X%/Y%), figures in the left represent voting interest, while figures in the right represent economic interest.
 (2) For figures not in split form - represent both voting and economic interest.

**AC ENERGY CORPORATION (Formerly AC Energy Corporation)
AND SUBSIDIARIES
SUPPLEMENTARY SCHEDULE REQUIRED
UNDER REVISED SRC RULE 68**

**Conglomerate Map
As at December 31, 2022**

INTERNATIONAL BUSINESS – USA



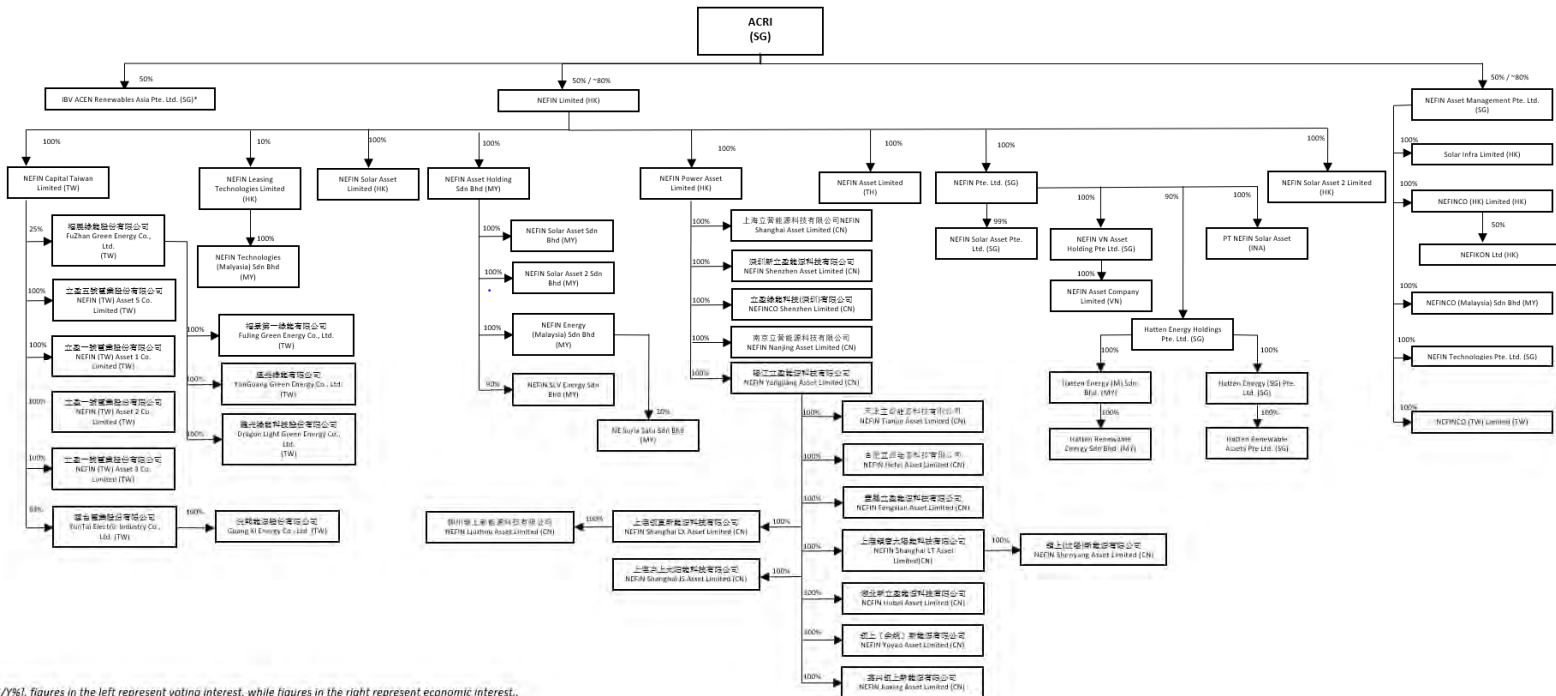
NOTES

- (1) For figures in split form (X%/Y%), figures in the left represent voting interest, while figures in the right represent economic interest.
- (2) For figures not in split form - represent both voting and economic interest.

AC ENERGY CORPORATION (Formerly AC Energy Corporation)
AND SUBSIDIARIES
SUPPLEMENTARY SCHEDULE REQUIRED
UNDER REVISED SRC RULE 68

Conglomerate Map
As at December 31, 2022

INTERNATIONAL BUSINESS – OTHER JURISDICTIONS



NOTES:
 (1) For figures in split form [X%/Y%], figures in the left represent voting interest, while figures in the right represent economic interest.
 (2) For figures not in split form, figures in black font represent both voting and economic interest
 (3) The official company name of CN and TW entities is only in Chinese, the English name is given for internal identification use only.
 (4) The Hatten Energy Holdings Pte. Ltd is a joint venture of NEFIN Group. It requires unanimous consent on relevant activities decisions.
 (5) The Group holds NEFIN Asset Company Limited 100% through nominee.
 * Effectivity of the shareholders' agreement for this joint venture is still subject to fulfillment of certain conditions precedent.